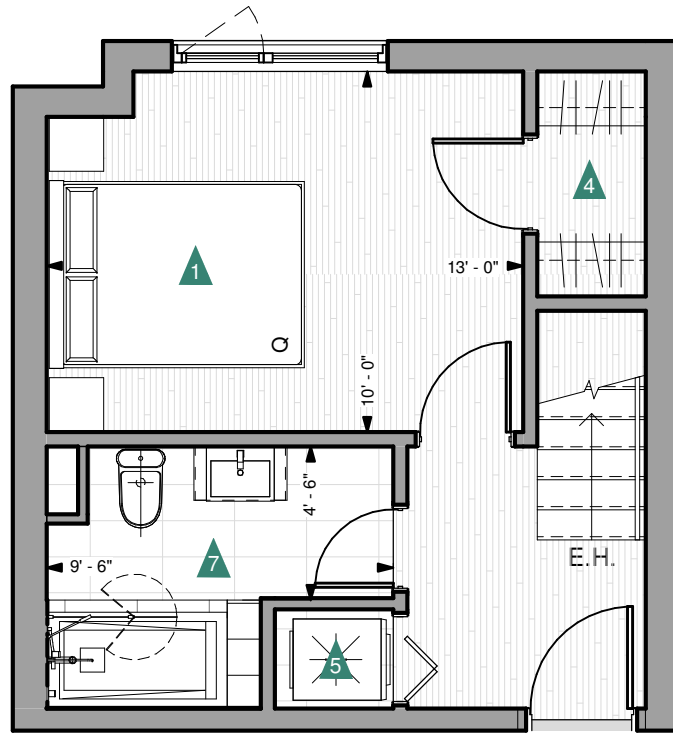


Arborescence

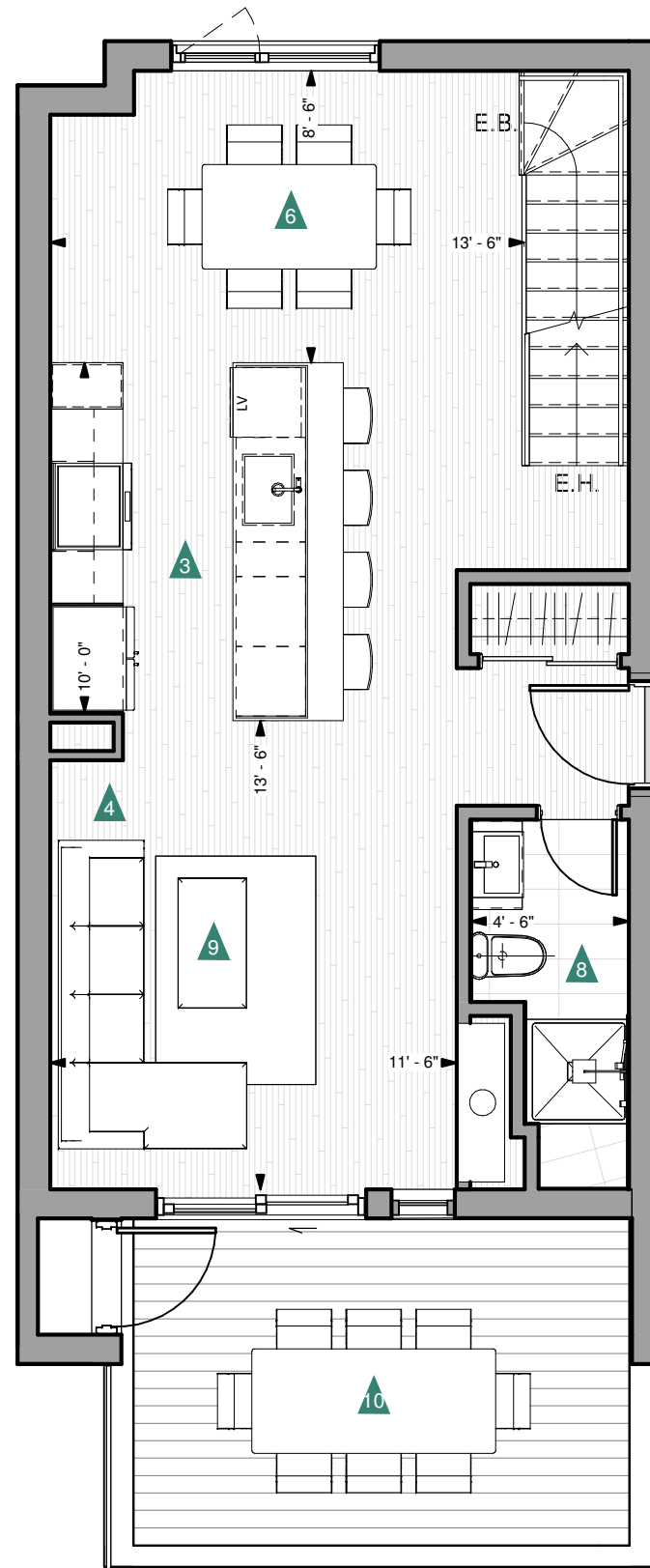
CONDOS-REFUGES

modèle **1112**

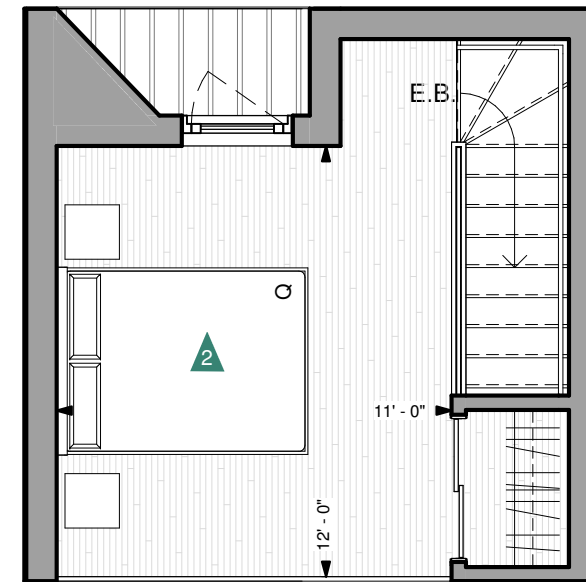
NIV. 2	329 p ² / 30,5 m ²
NIV. 3	592 p ² / 55,0 m ²
NIV. 4 (MEZZANINE)	235 p ² / 21,9 m ²
DOUBLE HAUTEUR	286 p ² / 26,6 m ²
SUPERFICIE	1442 p² / 134,0 m²
TERRASSE EXTÉRIURE	161 p ² / 15 m ²



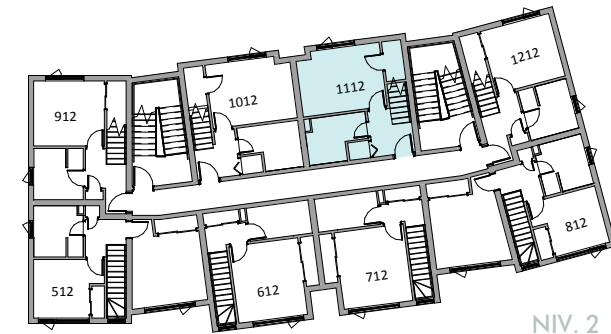
NIV. 2



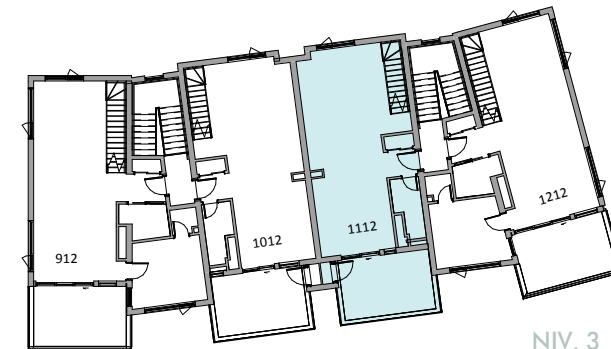
NIV. 3



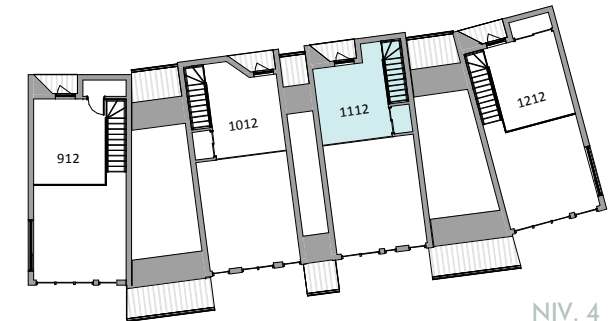
NIV. 4
(MEZZANINE)



NIV. 2



NIV. 3



NIV. 4
(MEZZANINE)

- 1** CHAMBRE 1 / BEDROOM 1
10' - 0" x 13' - 0" / 3,0 m x 4,0 m
- 2** CHAMBRE 2 / BEDROOM 2
12' - 0" x 11' - 0" / 3,5 m x 3,5 m
- 3** CUISINE / KITCHEN
10' - 0" x 9' - 6" / 3,0 m x 3,0 m
- 4** GARDE-ROBE / WALK-IN
6' - 0" x 3' - 0" / 2,0 m x 1,0 m
- 5** LAVAGE / LAUNDRY
3' - 0" x 3' - 6" / 1,0 m x 1,0 m
- 6** S. À MANGER / DINING ROOM
8' - 6" x 13' - 6" / 2,5 m x 4,0 m
- 7** SALLE DE BAIN 1 / BATHROOM 1
7' - 6" x 9' - 6" / 2,0 m x 3,0 m
- 8** SALLE DE BAIN 2 / BATHROOM 2
5' - 0" x 4' - 6" / 1,5 m x 1,5 m
- 9** SÉJOUR / LIVING ROOM
12' - 6" x 11' - 6" / 4,0 m x 3,5 m
- 10** TERRASSE / TERRASSE
10' - 0" x 14' - 6" / 3,0 m x 4,5 m

Les superficies et dimensions sont approximatives et sujettes à des modifications sans préavis. La superficie brute des logements inclut la moitié des murs mitoyens et les murs extérieurs. Le mobilier et les électroménagers sont montrés à titre indicatif seulement.

Areas and dimensions are approximate and are subject to modifications without notice. The areas shown are gross and include half the common walls and the exterior walls. The furniture and appliances are shown for information purposes only.

info@vivrebromont.ca | 450-390-2100